

Jet Spot120

120W Spot Moving head with 9° - 46° zoom

ORDER CODE: JETSPOT120



Jet Spot120 is a budget friendly, zoomable, and compact moving spotlight, making it a perfect fit for various venues and corporate events with its compact form factors.

Jet Spot120 delivers remarkable flexibility with its motorized zoom, which ranges from 9° to 46°. The 120W white LED source produces a surprising 5.600 lumen fixture output.

The effect section includes one color wheel, one rotating and one static gobo wheel, prism and frost, meeting the creative demands of lighting designers.

MAIN FEATURES

- 120W White LED source, 5.600 fixture lumen output
- Motorized zoom from 9° to 46°
- One color wheel, one rotating and one static gobo wheels, prism and frost

TECHNICAL SPECIFICATION

LIGHT SOURCE

- Source: 120W high-power white LED
- CCT: 7.500K
- Luminous flux: (9,1°) 4'502 lm - (46,3°) 5'686 lm @Full
- Lux: (9,1°) 9'452 lx - (46,3°) 681lx @5 m full
- Source life expectancy: > 30.000 h

OPTICS

- Zoom range: 9,1° - 46,3° motorised linear zoom
- Lens diameter: 75mm / 2.95"
- Lens type: HD anti-reflection lenses with achromatic coating
- Focus: motorised

COLOUR SYSTEM

- CCT: on wheel 3.200 K
- Colour wheel: open+8 colour filters

DYNAMIC EFFECTS

- Control Resolution: 16-bit dimmer
- Rotating gobos: 7 rotating gobos + open, interchangeable, indexing
- Gobo size: 22,5 mm - image: 17 mm - thickness: up to 3 mm
- Fixed gobos: 10 fixed gobos + open
- Circular prism: 3f with bi-directional rotation, indexing, interchangeable
- Frost: linear 0 - 100% light frost filter, interchangeable

BODY

- Hardware on-board: sockets for quick-Lock Omega bracket (clamp not included)
- Pan range: 540°
- Tilt range: 260°
- Pan/Tilt resolution: bit 16-bit
- Feedback: automatic repositioning after accidental movement
- Body: aluminium structure with high-resistance polycarbonate cover
- Body colour: RAL 9004

CONTROL

- Protocols: DMX512, RDM
- DMX channels: 20channel
- RDM: RDM for remote monitoring and settings
- Display: LCD high resolution colour display with autoflip
- Firmware upgrade: via DMX with UPBOXPRO/UPBOX2 (USB-DMX interface not included) or via USB pen drive

ELECTRONICS

- Dimmer: linear 0 ~ 100% electronic dimmer
- Dimmer curves: 4 selectable dimming modes available
- Strobe / shutter: 1 - 30 Hz, electronic
- Display battery: self-charging battery backup
- Operating temperature: -10° ~ +45° Ta
- LED Control: flicker free frequency with adjustable PWM
- Selectable PWM: 600 ~ 50.000 Hz

ELECTRICAL

- Mains power supply: 100-240V - 50/60Hz
- Max power consumption: 238W
- Standby power: 50,2 W
- Output (at 230V): 16 units on a single power line
- Power factor: > 0,94

PHYSICAL

- IP rating: 20
- Cooling: active, silent operation
- Suspension and fixing: any position with quick-lock omega brackets
- Signal connection: Neutrik XLR 5p IN/OUT connectors
- Power connection: Seetronic powerCON TRUE IP65 IN/OUT
- Dimensions (WxHxD): 340 x 479 x 205mm / 13.39"x18.86"x8.07"
- Weight: 13,5kg / 29.76lbs

CERTIFICATIONS / APPROVALS

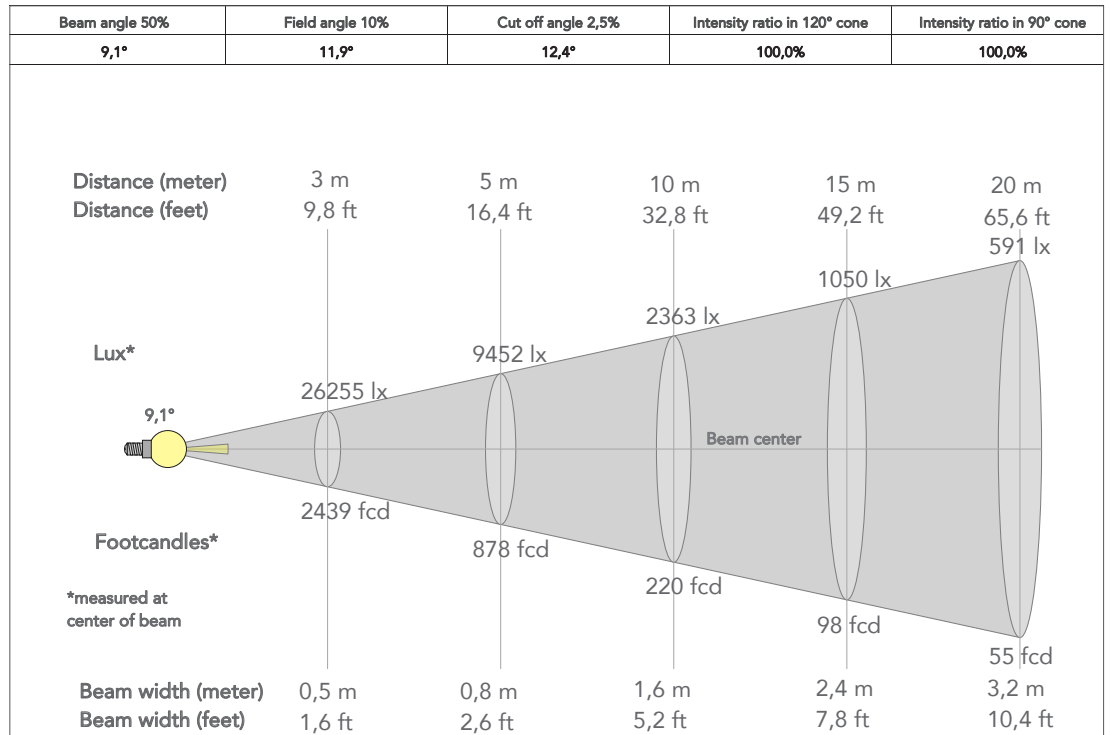
- Certifications / Approvals: CE, RCM

ACCESSORIES & RELATED PRODUCTS

▪ FCLJETH200	Flight case for 4 pcs of JETHYB200	▪ 9533FXWL03	Ass. 3x2.5mm TH07 cable, SCHUKO plug, MENAC3FXW socket, L.3m
▪ JS120HF	Optional accessory heavy frost filter for JETSPOT120	▪ 9513FXWL03	Ass. 3x2.5mm TH07 cable, 16A 3p 230V CEE plug, MENAC3FXW socket, L.3 m
▪ JS120LF	Optional accessory light frost filter for JETSPOT120	▪ 958225L03	3x2.5mm TH07 Cable, 16A 3p PwCon MXW, 16A 3p PwCon FXW, L. 3m
▪ JS120P3F	Optional accessory 3F prism for JETSPOT120	▪ TOUR53415L03	Dmx cable HC5340. CANC5MXX XLR 5p->CANC5FXX XLR (f) 5p, L.3m
▪ JS120P5F	Optional accessory 5F prism for JETSPOT120	▪ UPBOXPRO	Firmware uploader kit, USB IN, 5-pin XLR DMX OUT connector
▪ JS120P4F	Optional accessory 4F prism for JETSPOT120		
▪ OS24PLUS	Quick-lock omega bracket, M12 hole		
▪ C6002B	Slim aluminium clamp, 200 kg loading, 48-51 mm tubes, M10 bolt		
▪ RSR1235B	Steel security cable for hanging bodies, inox steel shackle		

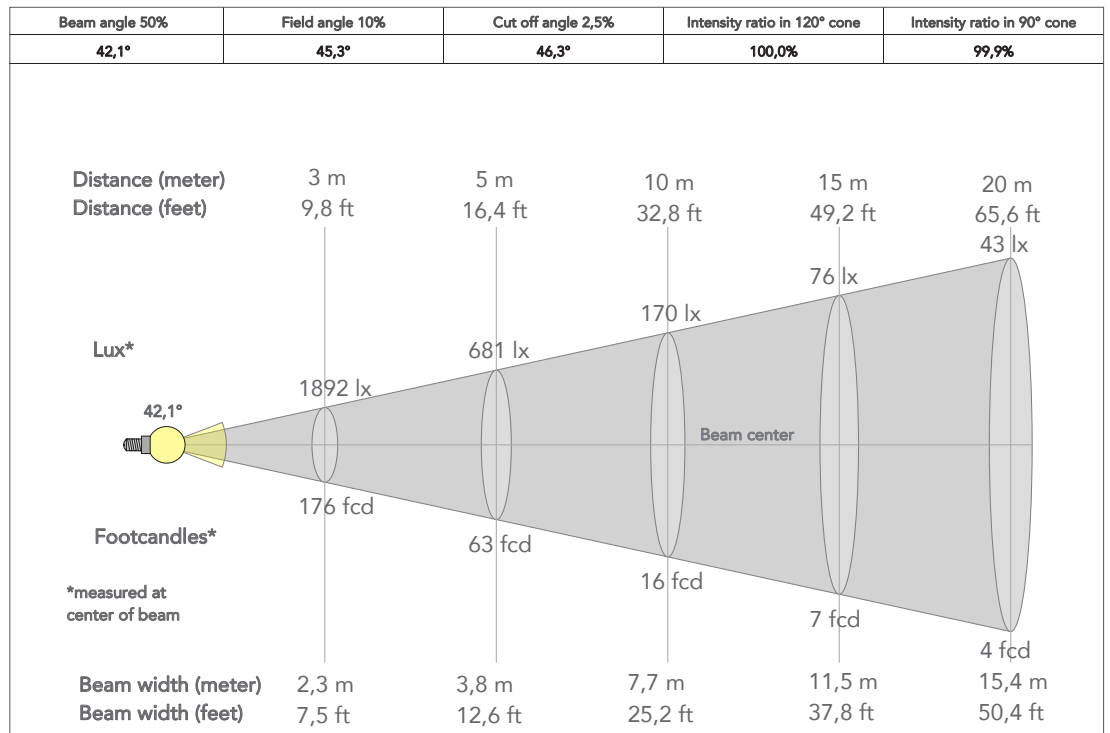
PRESET FULL ON

Beam angle 50%: 9°



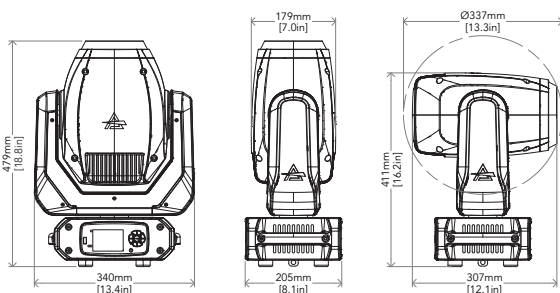
PRESET FULL ON

Beam angle 50%: 42,1°



TECHICAL DRAWINGS

CERTIFICATIONS / APPROVALS



Visit our website for specifications and tech documentations

