

# SmartBat Wash

15x20W LED Wash Light, IP65 rated, with an RGB + Warm White LED source, wirelessly controlled with battery or wired with mains power

ORDER CODE: **SMARTBATWASH**



## SMARTBATWASHPACK

- 1 x FLIGHT CASE with AC SEETRONIC IP65 power IN/OUT connector outside and 4 x AC power OUT connectors inside
- 4 x SMARTBATWASH with 25° magnetics filter on-board
- 4 x barndoors (**SBWBD**)
- 1 x 1,5 meters power cable (BARE END - SEETRONIC IP65 power IN connector)

## TECHNICAL SPECIFICATION

### LIGHT SOURCE

- Source:15x20 W RGB + Warm White LED
- Luminous flux:6'300 lm @full
- Lux:4'451 lx @5 m full
- CRI:> 95 @3200K ; > 93 @5600K
- R9:> 98 @3200K ; > 93 @5600K
- TLCI:> 84 @5600K
- TM30 Rf:94.2 @3200K ; > 92 @5600K
- TM30 Rg:104.4 @3200K ; > 105 @5600K
- Source life expectancy: > 50.000 h

### OPTICS

- Beam angle:10 °
- COLOUR SYSTEM
- Colour mixing: RGBWW
- CCT: CCT control through dedicated DMX channel
- White presets:2'800K - 10'000 K
- Colour wheel: virtual colour wheel with macros
- Macros: built-in white presets

### DYNAMIC EFFECTS

- Control Resolution: 16-bit dimmer, colours
- Static mode: selection of static colour
- Manual mode: manual adjustment of colour
- Auto mode: built-in programs with execution speed adjustment

### BODY

- Body: sturdy die-cast aluminium body
- Body colour: RAL 9004

### CONTROL

- Protocols: CRMX+W-DMX, DMX512, RDM
- Wireless Control: included, LumenRadio Timo Fx DMX/RDM compatible with both CRMX (Lumen Radio) and W-DMX (Wireless DMX)
- RDM: RDM for remote monitoring and settings
- Display: Graphic User Interface
- Firmware upgrade: yes, via USB - DMX interface (UPBOX1) not included
- IR: infrared sensor controlled by remote
- Master/Slave: for synchronised operation of more units linked in a chain

The **Smart BatWash** is a high-powered LED Wash light that can be operated wirelessly or wired. This IP65 Wash Light has 15 x 20W RGB + Warm White LED emitters, and it's Spektra™ calibrated to guarantee consistency, high-quality white values (CRI >93), a dynamic array of true colours with smooth colour mixing, and a powerful 6,282-lumen output. The **Smart BatWash** is very flexible - it can be used wirelessly with the built-in battery, using CRMX or W-DMX or, alternatively, wired with power and data cables, bypassing the battery and enabling higher brightness levels. The beam angle can easily be adjustable through a magnetic beam shaper filter, allowing a broader coverage whilst keeping a high output. The **Smart BatWash** has all the software features of the Ecl range, sharing the same user settings and capabilities.

## MAIN FEATURES

- High-powered IP65 LED Wash light, wireless (CRMX+W-DMX)/wired control, battery/AC power
- 15x20W RGB + Warm White LED source, powerful 6,282-lumen output high CRI (>93)
- Range of holographic filters that modify the shape of the beam angle

- 4 x 1,5 meters link power cable (SEETRONIC IP65 power OUT connector - SEETRONIC IP65 power IN connector)
- 4 x omega clamp (**OS25**)
- 1 x User Manual

## ELECTRONICS

- Dimmer: linear 0 ~ 100% electronic dimmer
- Dimmer curves:4 selectable dimming modes available
- Strobe / shutter:1 - 30 Hz, electronic
- Operating temperature: 0° ~ +45°
- LED Control: flicker free operation
- Selectable PWM: 600 ~ 25.000 Hz

## ELECTRICAL

- Mains power supply: 100-240V - 50/60Hz
- Max power consumption:180 W
- Power factor:>0,94

## BATTERY

- Battery:16,8 V lithium
- Estimated battery life:Selectable 3h / 6h / 8h / 12h / 16h / 18 h
- Re-charge connection: Directly from the mains power or magnetic fast-charge in case
- Re-charge time:5 h/max
- Battery status: shown on display
- Other:Battery recharge in AC and DC, operation in main power with possibility to disable battery recharge through software and charging operation in flightcase

## PHYSICAL

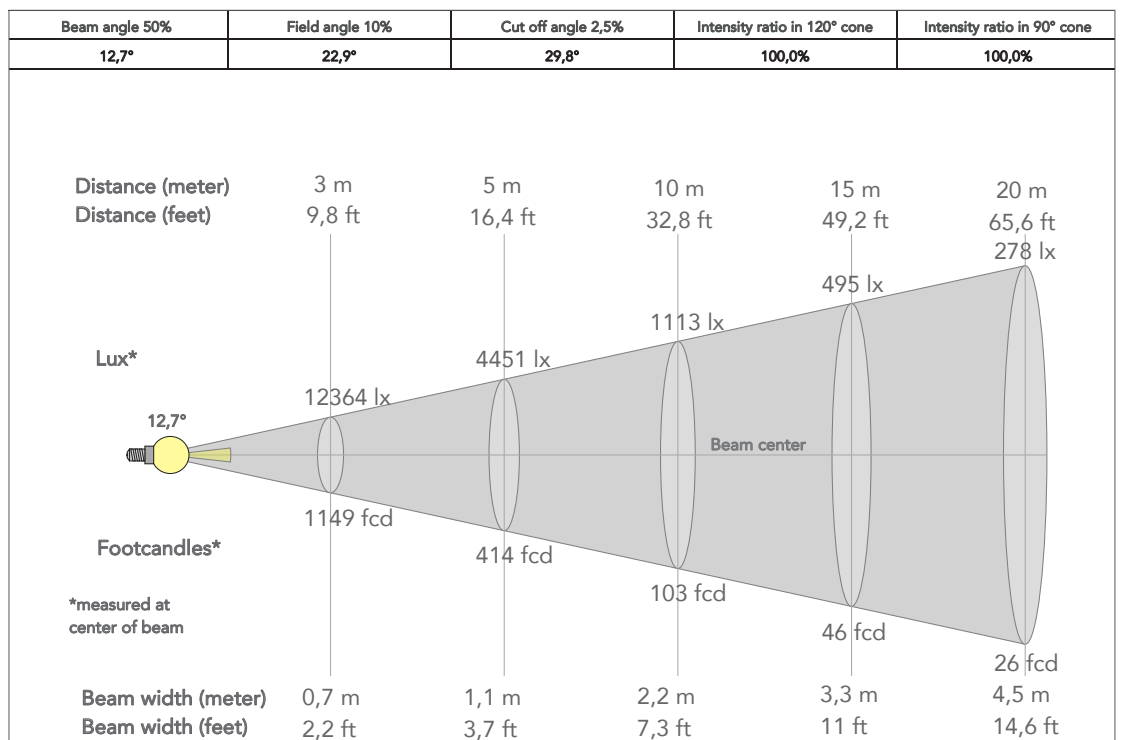
- IP rating:65 for temporary outdoor application, not for fixed installations
- Cooling: passive cooling and fan-free
- Suspension and fixing: any position with quick-lock omega brackets
- Signal connection:IP65 Seetronic XLR 5p IN/OUT connectors
- Power connection: magnetic DC connector for battery recharge and Seetronic powerCON TRUE IP65 IN/OUT connector
- Dimensions (WxHxD):381x344x143 mm
- Weight:9,8 kg
- CERTIFICATIONS / APPROVALS
- Certifications / Approvals: CE, UKCA, RCM, cTUVus, FCC

## ACCESSORIES

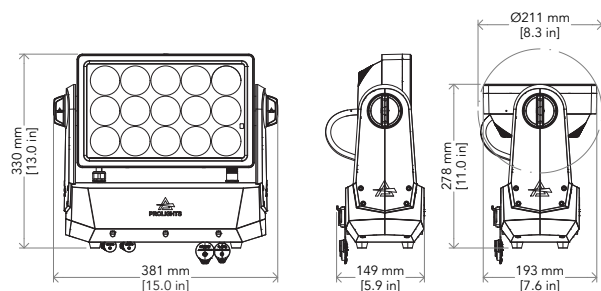
- FCLSMARTBATWASH Flight case for 4 SMARTBATPLUSWASH, internal AC battery charging
- SBWFILTER25/40 1060 Light diffusion filter for SMARTBATWASH, 25°/40° 10°x60°
- SBWBD Black barn door 4 directional flaps to adjust the light beam, comp. SMARTBATWASH
- OS25D13 Quick-Lock omega bracket, M13 hole
- SBWPOWER Single charger for SMARTBATWASH
- C6002B Slim aluminum clamp, 200kg loading, 48-51mm tubes, M10 bolt, Black
- PRL-IRC RGBWA IR controller, 29 buttons, manual/static colours, auto programs, fade
- RSR0630B Steel security cable for hanging bodies, inox steel shackle, L=60 cm, black
- 9533FXWL03 Ass. 3x2.5mm TH07 cable, SHUKO plug, MENAC3FXW socket, L.3m
- WSBBF1G5 BlackBox F-1 G5 transmitter, 2,45GHz & 5.2/5,8 GHz, DMX/RDM, 512Ch
- WSBBF1G6 BlackBox F-1 G6 transrec, 512ch, 2.45GHz, DMX&RDM,Bluetooth,G3,G4,G4S, G5, CRMX
- WSBBR512G5 BlackBox R-512 G5 receiver 512Ch, 2.45GHz & 5.8GHz, DMX/RDM optional
- WSBBR512G6 BlackBox R-512 G6 receiver 512Ch, 2.45GHz,DMX&RDM, Bluetooth,G3,G4,G4S,G5,CRMX
- IPTESTBOX Portable vacuum and pressure tester for ProLights IP fixtures
- UPBOX1UP5 Firmware uploader kit, USB IN, 5pin XLR DMX OUT, USB OUT

## PRESET FULL ON

Beam angle 50%: Native



## TECHICAL DRAWINGS



## CERTIFICATIONS / APPROVALS



Conforms to UL STD. 1573  
Certified to CSA STD: C22.2 NO. 166

Visit our website  
for specifications and  
tech documentations

